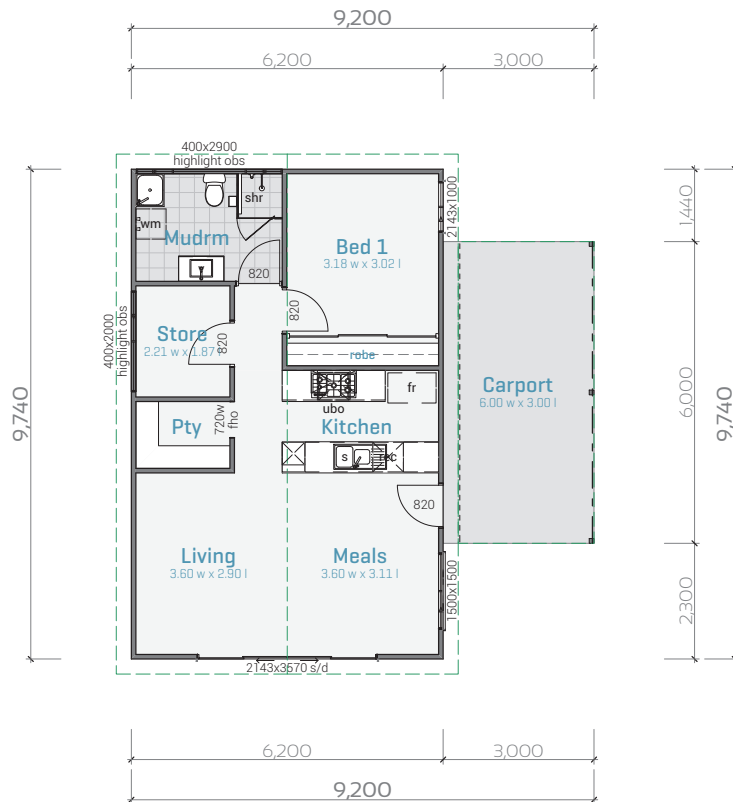


The Wylie



The Wylie Design Notes

Ceiling Height	2.7m
Ground Floor area	60.39
Carport area	18.00
Total area	78.39 m²

PLANS DRAWN ON BEHALF OF KITCO BY

DOMESTIC DRAFTING SERVICE
25a Dorothy St Gosnells 6110 | T: 08 9398 2139

