

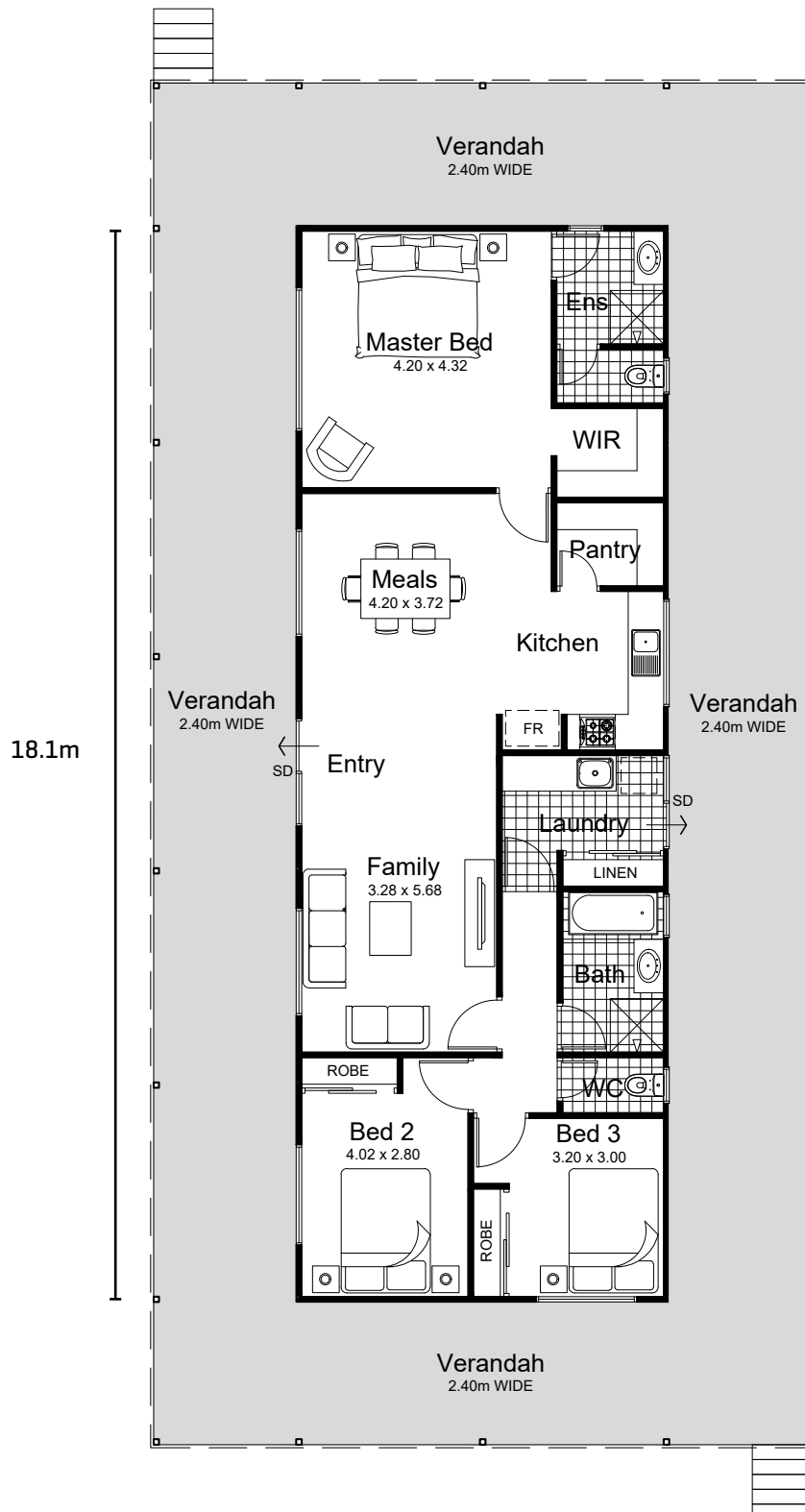
# The Denmark



6.27m

## The Denmark Design Notes:

Ceiling Height:	2.7m
Floor area:	113.49m <sup>2</sup>
Verandah area:	140.01m <sup>2</sup>
<b>Total area:</b>	<b>253.50 m<sup>2</sup></b>



## CUSTOMISATION

All KitCO Designs are able to be customised to accommodate your needs, whether it be room arrangement, configuration or size. Please don't hesitate to contact us regarding any questions you may have regarding the design, or if you'd like to see various customised options of the particular design.

enquiries@kitcobuilders.com.au  
 Unit 4/9 Warman St Neerabup 6031  
 office: 9404 6621 fax: 9404 6222  
 kitcobuilders.com.au

SEASONED  
 PROFESSIONALS IN  
 BUILDING FRAMED  
 HOMES